

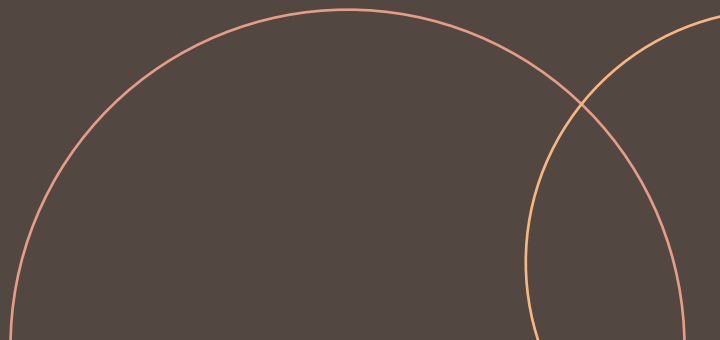


The ALIVE National Centre  
for Mental Health  
Research Translation

# Towards Assessing the Impact of the ALIVE National Centre for Mental Health Research Translation

The Mission of the ALIVE National Centre for Mental Health Research Translation (The ALIVE National Centre) is to transform mental health and wellbeing through primary care and community action. The Vision is for vibrant communities that support mental health and promote well-being to enable people to thrive.

The Mission and Vision of the ALIVE National Centre are operationalised through its architecture and activities, underpinned by values of lived-expertise, practice wisdom, outcomes-driven, inclusive, authentic and brave.



**The ALIVE National Centre's Blueprint for the co-designed Roadmap** (Figure 1) describes the key Centre activities that result in the Consensus Statements towards the regeneration of the mental health ecosystem. These activities are ongoing and evolving, and include:

*Making use of what is already published*

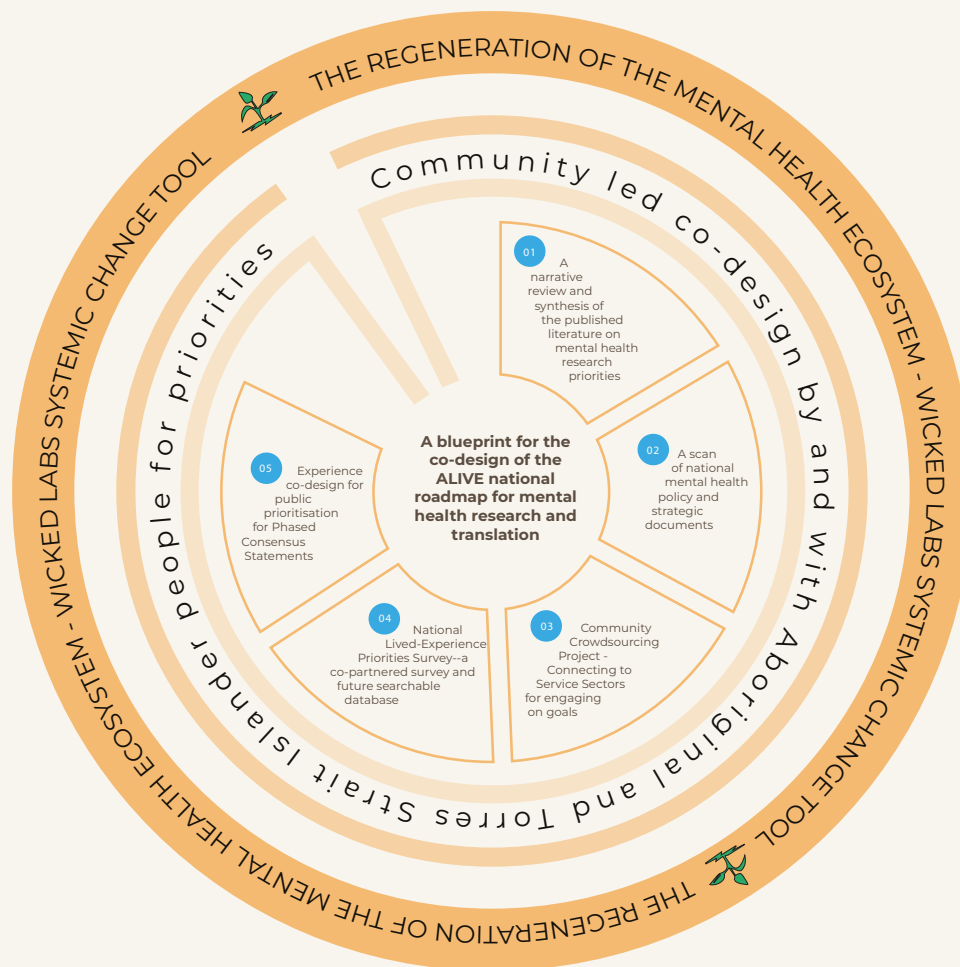
- Review of published literature on mental health research priorities
- Review of Australian policy and strategic documents

*Hearing directly from the people*

- Community Crowdsourcing Project
- National Lived Experience Priorities surveys
- Experience co-design for public prioritisation
- Community-led co-design of priorities by and with Aboriginal and Torres Strait Islander people

*Mapping mental health sector change over time*

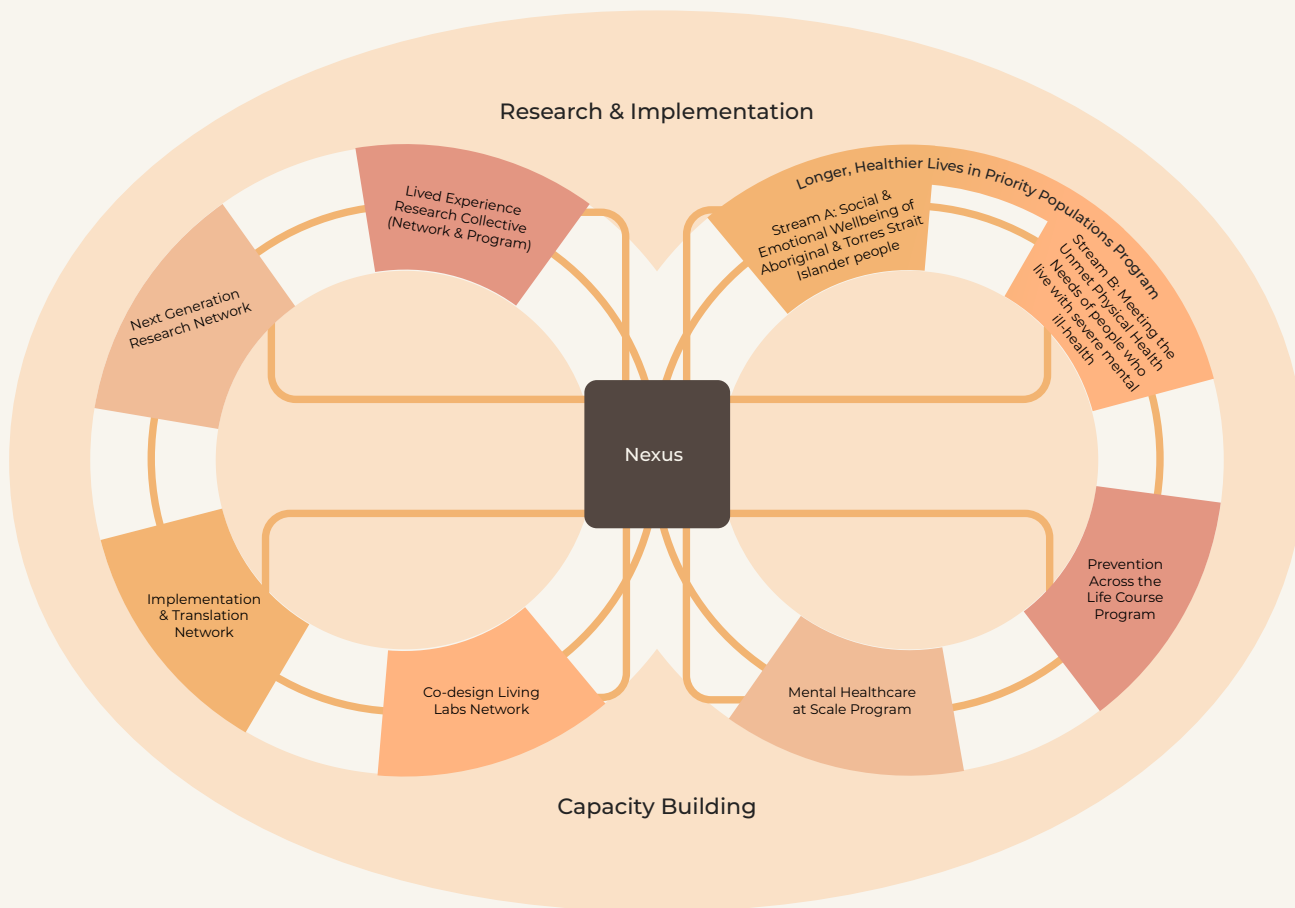
- Wickedlabs Systemic Change Tool



**Figure 1:** ALIVE National Centre for Mental Health Research Translation's Blueprint for the co-designed Roadmap

The Consensus Statements outline implementation actions and translational goals formed through the Blueprint activities. Over time, these Consensus Statements will collectively form the National Roadmap for Mental Health Research Translation. The National Roadmap will thus be informed by the community, and is continually evolving, updated yearly at the symposium and following annual survey findings.

The goals of the National Roadmap are addressed through the **ALIVE National Centre's knowledge translation mechanisms** (Figure 2).



**Figure 2:** ALIVE National Centre for Mental Health Research Translation’s knowledge translation mechanisms

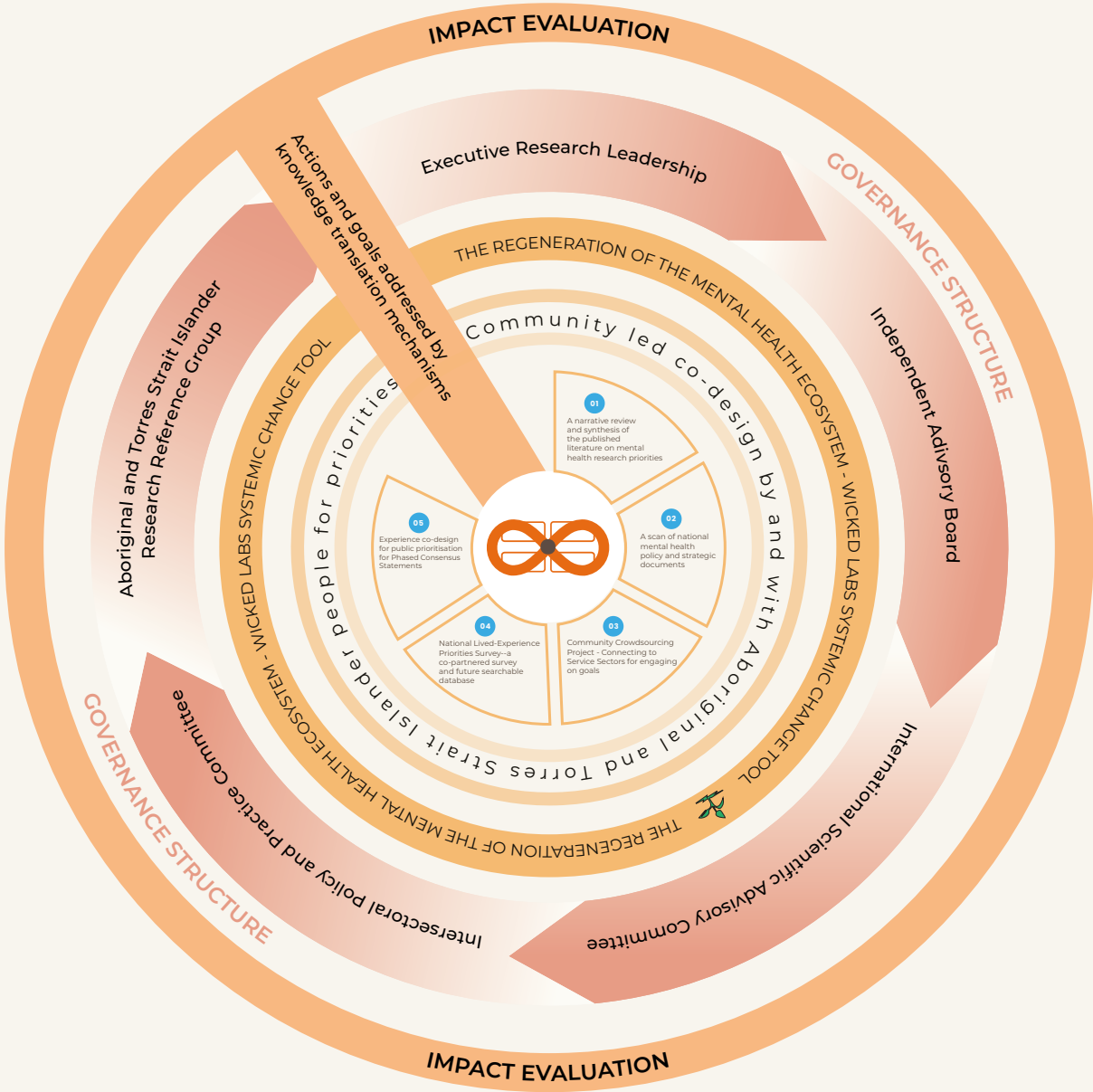
The **ALIVE National Centre’s knowledge translation mechanisms** consist of Programs and Networks comprised of people who collaborate toward a shared purpose. Each of these mechanisms has a set of goals that contribute to the ALIVE National Centre’s Mission and Vision. Broadly, these mechanisms function through activities involving: (i) research and implementation, and (ii) capacity building.

*Research and implementation* activities aim to address the co-designed goals of the National Roadmap and make a direct impact on research and translation in mental health. Essential elements include co-leadership with lived-experience, and partnership with mental health organisations and communities.

*Capacity building* involves supporting the development of organisations, researchers, and people with lived experience to engage with translational research processes, and drive quality improvement toward achieving the goals of the National Roadmap.

Research and implementation activities, including capacity building, are operationalised through the Networks and Programs. These are dynamic functions that are dependent on the current focus of each collective, and leadership of the members. Collaboration is facilitated through a nexus model, in which key members work together to align activities with the Mission and Vision of the ALIVE National Centre. The Co-leads of each of these mechanisms also connect with the Centre’s strategic governance structure (Committees, Reference Group and Advisory Board) to ensure alignment with national and international mental health sector developments.

In summary, the *Blueprint* activities lead to the Consensus Statements, which over time form the National Roadmap. The co-designed actions and goals of the National Roadmap are addressed through the *knowledge translation mechanisms*, comprised of people with a shared purpose working through Programs and Networks. Collaboration is facilitated through a nexus model which ensures alignment with the ALIVE National Centre’s Mission and Vision. The Centre maintains connection with the national and international mental health landscape, and honours lived-experience, Indigenous Data Sovereignty and Knowledge Systems through its strategic governance structure based on a Culturally Adaptive Governance structure<sup>1</sup> (Figure 3).



**Figure 3:** Architecture, activities and impact of the ALIVE National Centre for Mental Health Research Translation

The ALIVE National Centre’s architecture and activities ensure that action is aligned with the priorities of the people most impacted to facilitate vibrant communities that support mental health and promote wellbeing and enable people to thrive. Evaluating the impact of this approach will be guided by the **Framework for The ALIVE National Centre for Mental Health Research Translation’s Impact Evaluation** (Table 1).

<sup>1</sup> Duke, D. et al. (2021). Culturally Adaptive Governance—Building a New Framework for Equity in Aboriginal and Torres Strait Islander Health Research: Theoretical Basis, Ethics, Attributes and Evaluation. *Int. J. Environ. Res. Public Health*. 18(15), 7943; doi:10.3390/ijerph18157943

**Table 1:** Framework for the ALIVE National Centre for Mental Health Research Translation's Impact Evaluation

ALIVE National Centre					
		Members	Partners	Mental health & research sector	
Evaluation of the Implementation of the Roadmap	Micro-scale <i>(individual level impact)</i>	Surveys disseminated through the ALIVE National Centre's membership base & symposia.	Evidence of collaborations, funding, implementation & impact	Engagement with the ALIVE National Centre Roadmap, networks, lived-experience research collective, events & symposia, training & research	Social return on investment of the ALIVE National Centre
	Meso-scale <i>(impact on collectives such as organisations &amp; communities)</i>		Interviews with lead research staff within each of the ALIVE National Centre partner universities & organisations	Brief survey about awareness of the ALIVE National Centre Roadmap & outputs	
	Macro-scale <i>(impact on systems-level, such as on policy or the sector)</i>		Interviews with members of the ALIVE National Centre's governance group	Interviews with leaders (lived-experience, First Nations and across disciplines) in the mental health & research sectors	

The impact of the ALIVE National Centre will be evaluated through two interconnected streams of work. The first stream involves an evaluation of the implementation of the Roadmap. The second stream involves an assessment of the social return on investment (SROI) of the ALIVE National Centre, and its networks and flagship programs.

Evaluation will involve surveys, focus groups, and interviews and other assessment methods. Commencing in 2023, the evaluation will continue until March 2026 (see Table 1). Stakeholders to be involved in the evaluation will comprise:

1. *Members:* People who are: (i) members of networks or committees, or (ii) employed staff or investigators with the ALIVE National Centre.
2. *Partners:* Representatives from organisations working collaboratively on projects with the ALIVE National Centre.
3. *Mental health and research sector:* People from the mental health, suicide prevention and intersecting research sectors who may be: (i) collaborating on projects with the ALIVE National Centre, or (ii) in leadership roles across lived-experience, First Nations and interdisciplinary sector advocacy.

Evaluation findings will be shared throughout Centre research fora, at annual symposia and contribute to updates for the co-design of the ALIVE National Centre for Mental Health Research Translation Roadmap.

### **Prepared by the Impact Evaluation Team**

Griffith University

Dr Justin Chapman, Dr Caroline Robertson, Prof Amanda Wheeler

University of Tasmania

Dr Nizam Abdu, A/Prof Amanda Neil

### **Contacts**

Evaluation of the Implementation of the Roadmap:

Caroline Robertson (caroline.robertson@griffith.edu.au)

Social Return on Investment analysis:

Nizam Abdu (nizam.abdu@utas.edu.au)

### **Acknowledgements**

We acknowledge the Traditional Owners of the land on which we work, and pay our respects to the Elders, past and present.

The ALIVE National Centre for Mental Health Research Translation is funded by the National Health and Medical Research Council (NHMRC) Special Initiative in Mental Health GNT2002047.

**[www.alivenetwork.com.au](http://www.alivenetwork.com.au)**



@AliveNational



@thealivecentre



youtube.com/@thealivecentre



linkedin.com/in/the-alive-national-centre-b876b8209



facebook.com/profile.php?id=100083371261087